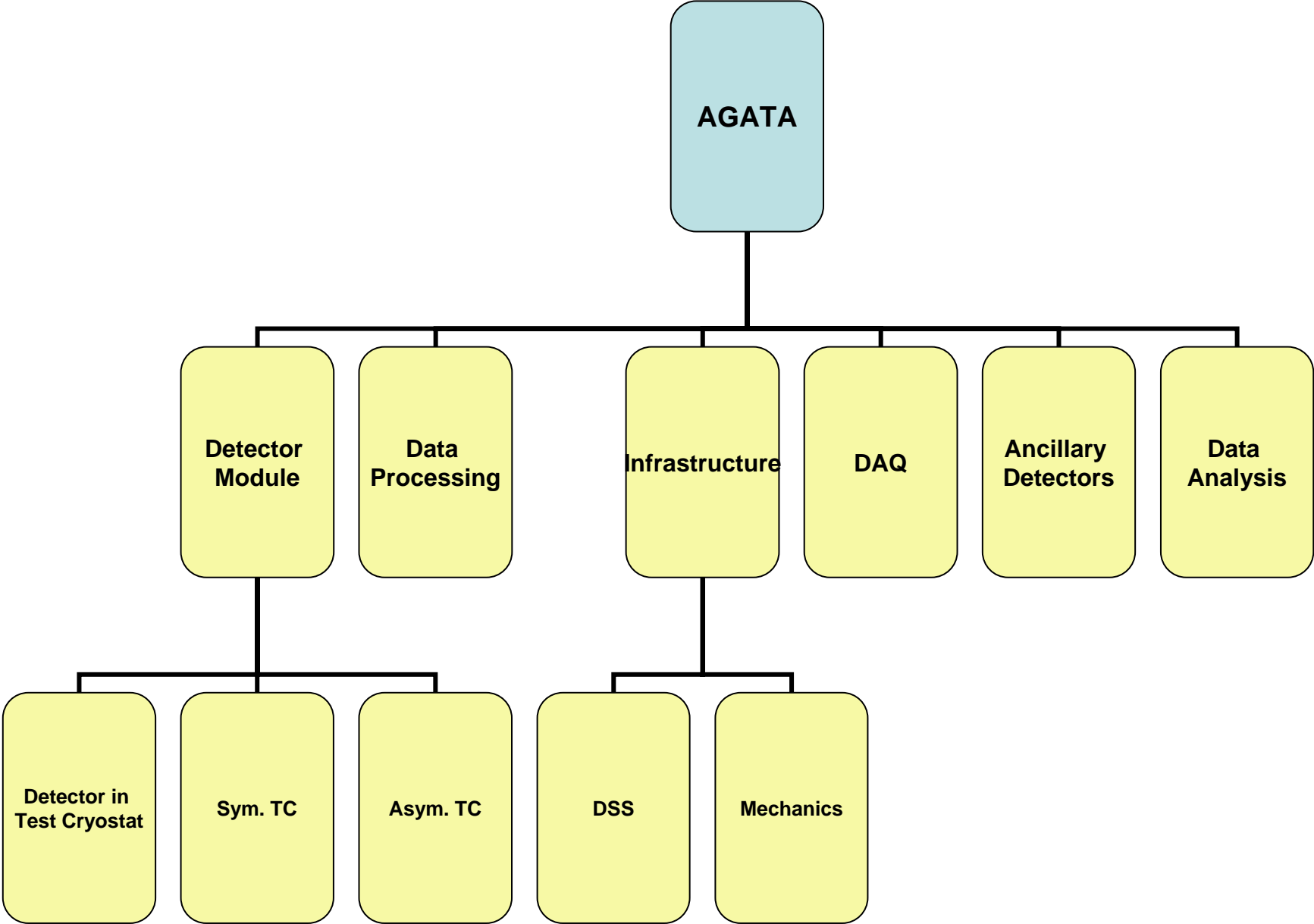


# Detector Parameter Database

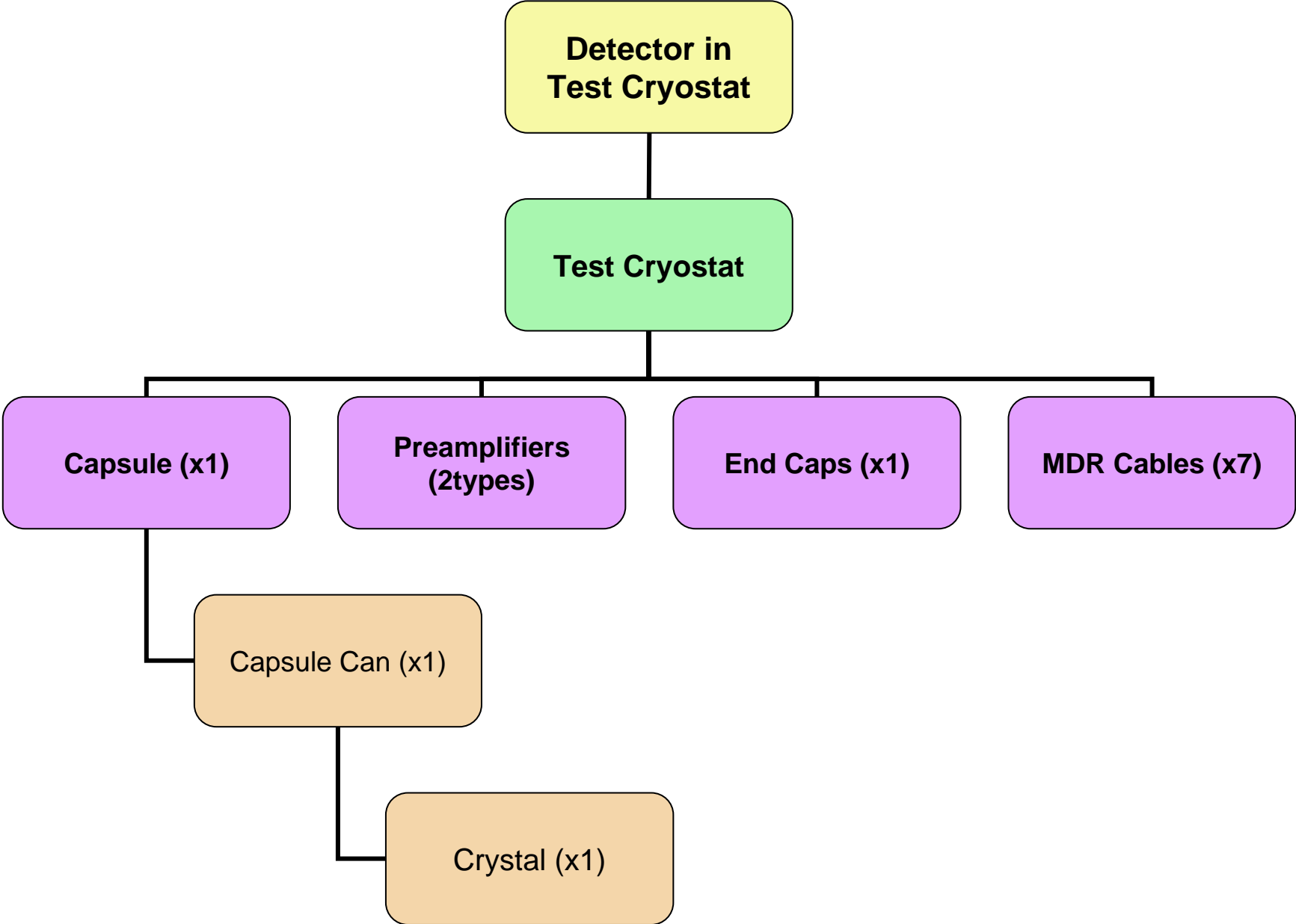
- List of elementary objects with their characteristics, history, links with other objects
- Association of elementary objects in a composite object
  - rules to associate objects
  - characteristics, history
  - links with elementary objects and with higher order composite objects
- Guide to validate a new object
- Guide for tests after repair
- ...

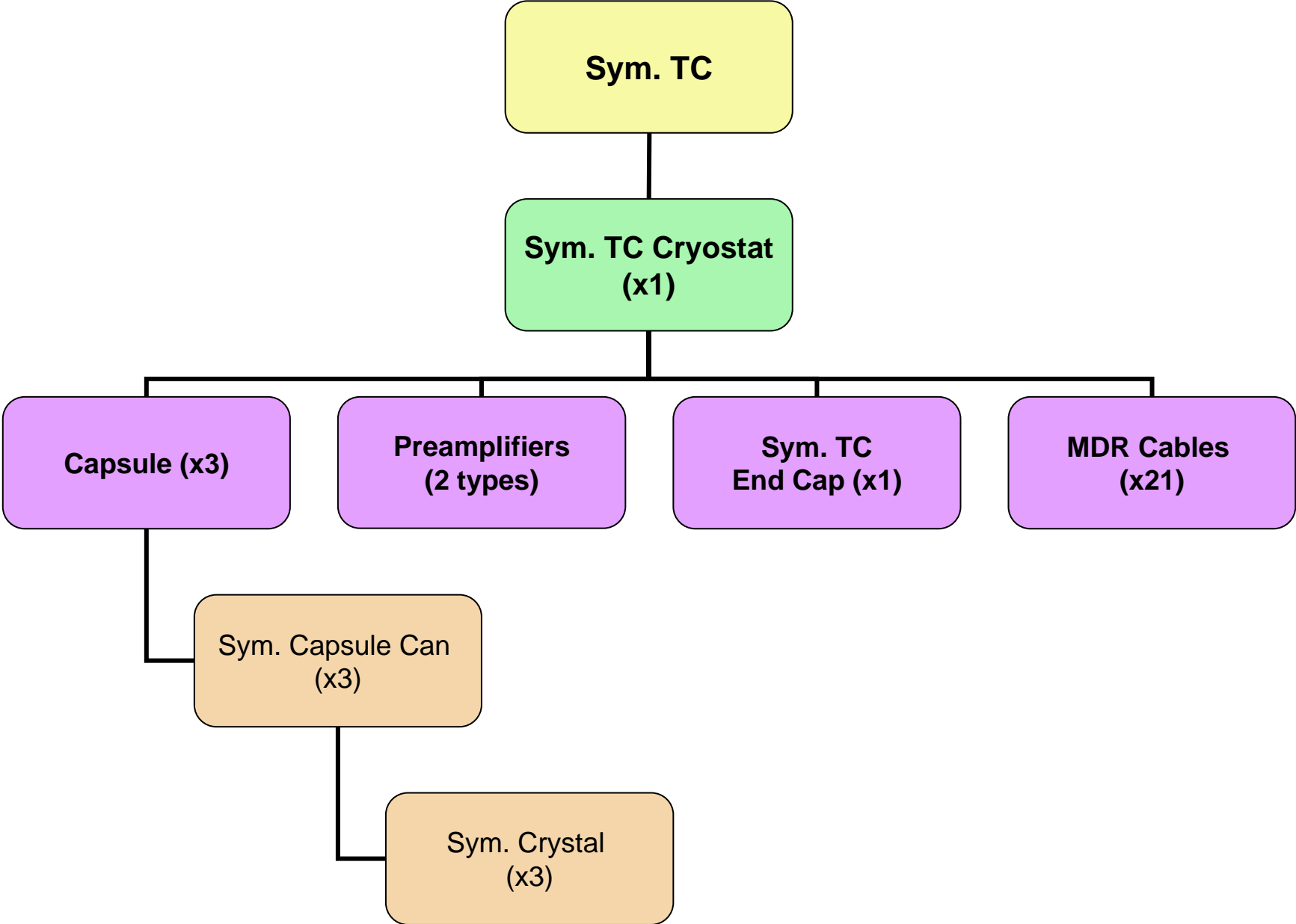


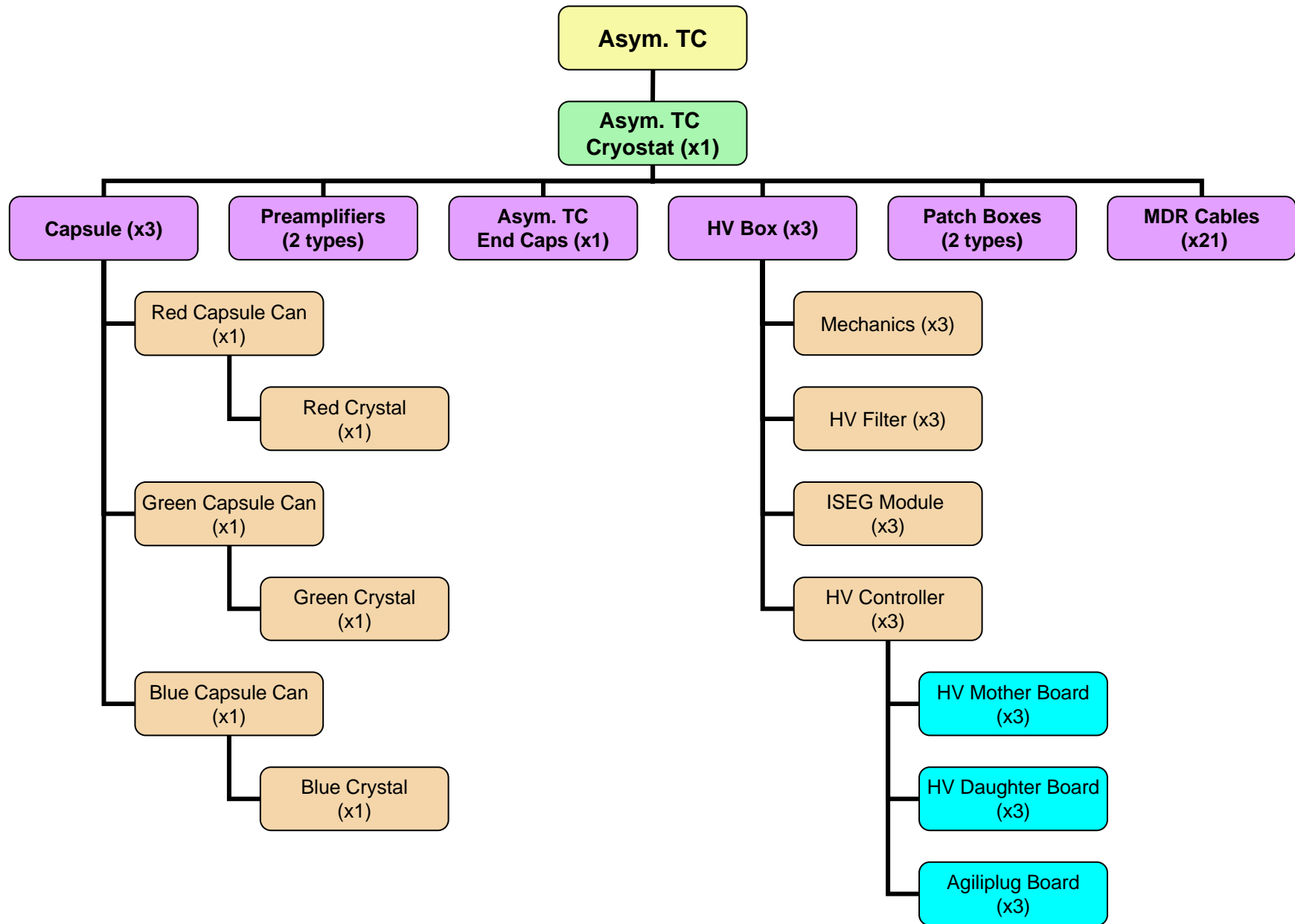
# Detector Module (Supervisor : P. Reiter)

Howmany of each type ?

- **Cryostats**  
(B. Bruyneel)
  - Test cryostats (5)
  - Symmetric TC (1)
  - Asymmetric TC (5)
- **Capsules (Composite Object)**  
(B. Bruyneel)
  - Crystals
    - Symmetric (3)
    - Red ( )
    - Green ( )
    - Blue ( )
  - Capsule can (?)
    - Symmetric (3)
    - Red ( )
    - Green ( )
    - Blue ( )
- **Preamplifiers (2types)**  
(A. Pullia)
  - Core PA Köln ( )
  - Segment PA (same type of PA per crystal)
    - Triple Segment PA board GANIL ( )
    - Triple Segment PA board Milano ( )
- **End caps**  
(B. Bruyneel)
  - Test cryostat
    - Cylindrical (1)
    - Symmetric ( )
    - Red (1)
    - Green (1)
    - Blue (1)
  - Symmetric TC (1)
  - Asymmetric TC (5)
- **HV boxes ( )(Composite Object)**  
(P.Jones)
  - Mechanics ( ) (I. Kojouharov)
  - HV filter ( ) (I. Kojouharov)
  - ISEG module ( ) (I. Kojouharov)
  - HV controller ( )(Composite Object)  
(C. Veyssière)
    - HV mother board ( )
    - HV daughter board ( )
    - AGILIPLUG board ( )
- **Patch boxes (2 types)**  
(B. Bruyneel)
  - LV patch box (6)
  - HV patch box (6)
- **MDR cables (130)**







# Data Processing (Supervisor : D. Bazzacco)

- Digitiser (21) (Composite Object)

(P. Medina)

- Core digitiser (21) (Composite Object)
  - Core digitiser mechanics (21)
  - Core digitiser power card (21) (Composite Object)
    - Dig. Core FADC mezz. card (21)
    - Dig. Segment FADC mezz. Card (42)
    - Dig. Xport monitoring mezz. card (21)
- Segment digitiser (21) (Composite Object)
  - Segment digitiser mechanics (21)
  - Segment digitiser power card (21) (Composite Object)
    - Dig. Segment FADC mezz. Card (84)
    - Dig. Xport monitoring mezz. card (21)
- Common parts
  - Dig. Segment FADC mezz. Card (126)
  - Dig. Xport monitoring mezz. card (42)

- GTS

(M. Bellato)

- GTS supervisor
- GTS crate
- GTS carrier (Composite Object)
  - GTS mezz. card

- Pre-Processing

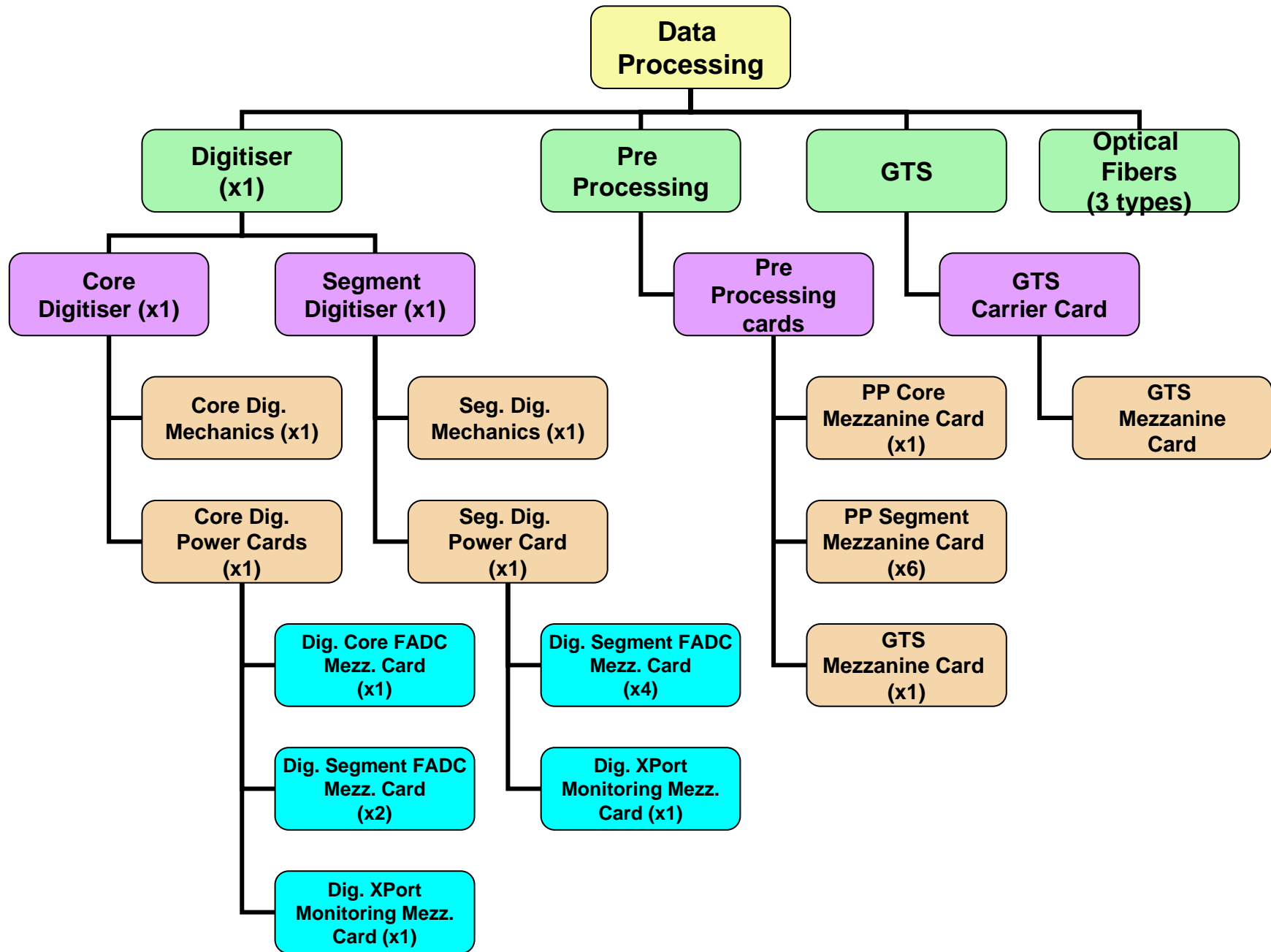
(I. lazarus)

- Rack (1)
  - Hypothesis** : the racks include PSA and PreProcessing
- ATCA crate (3)
- Pre-Processing cards
  - PP carrier card (36) (Composite Object)
    - PP Core Mezzanine Card (x18)
    - PP Segment Mezzanine Card (x108)
    - GTS Mezzanine Card (x18)
  - Ethernet switch (6)
  - Power supply (3)
  - Shelf manager (6)
- Pre-Processing cables (3 types)
  - Ethernet cables (18 -> number may vary)
  - ATCA power supply main cables (3)
  - ATCA 48 V cables (3)

- Optical fibers (3 types)

(A. Gadea)

- SNAPP12 Cables (x126)
- Offset Cables (x108)
- GTS Cables (x18)





# DSS (Supervisor : P. Jones)

- LV power supply

(C. Veyssière)

- LV crate (8)
- LV modules
  - +48V, +5V module (8)
  - +/-6V, +/-12V module (8)
  - +6.5V module (8)
  - PROFIBUS module (8)
- LV cables
  - LV PS to digitiser cable (8)
  - LV PS to preamplifier cable (8)
  - LV PS to asymmetric TC cryostat (8)
  - LV PS to PROFIBUS elements (8)

- PLC

(C. Veyssière)

- PLC router (1)
- PLC maintenance PC (1)
- PLC backplane (2)
  - CPU 319
  - DC coupler (2)
  - PLC power supply (2)
  - PLC Ethernet coupleur (1)
  - ET200M (1)
  - PLC digital input board (?)
  - PLC analog input board (?)
  - PLC digital output board (?)

- Autofill hardware

- Valve control crate (1)

(I. Kojouharov)

- Autofill master card (1)
- Valve control card (1)
- Dry contact card (1)
- Power supply card (1)
- Power card (1)

- PROFIBUS hardware

- PROFIBUS crate (1)

(I. Kojouharov)

- PT100 input card (1)
- Analog input board (1)
- Digital input board (1)
- Digital IN/OUT board (1)
- Power card (1)

- PROFIBUS infrastructure

(C. Veyssière)

- Repeater (1)
- Line terminaison (1)
- PROFIBUS cable (1)

- DSS GUI

(I. Kojouharov)

- GUI PC (1)
- PLC terminal (1)
- GUI terminal (1)

# Mechanics (Supervisor : J. Strachan)

- Mechanical basis

(J. Strachan)

- Support structure (?)
- Flanges (15)
- Detector pillars (36)
- Sleeves bearing (6) (**Composite Object**)
  - Sub-structure (**3 parts to be completed**)

- Beam line

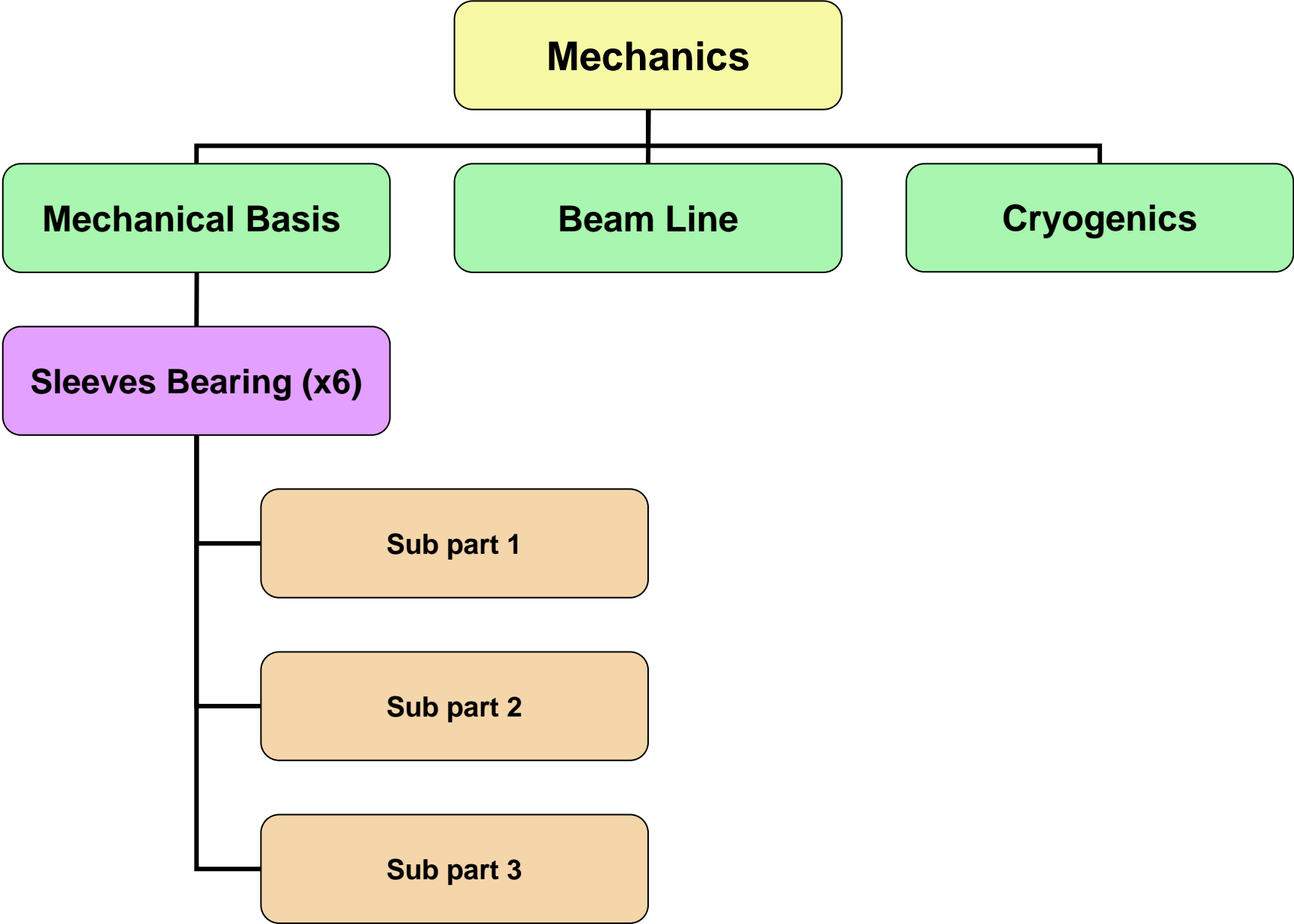
(A. Gadea)

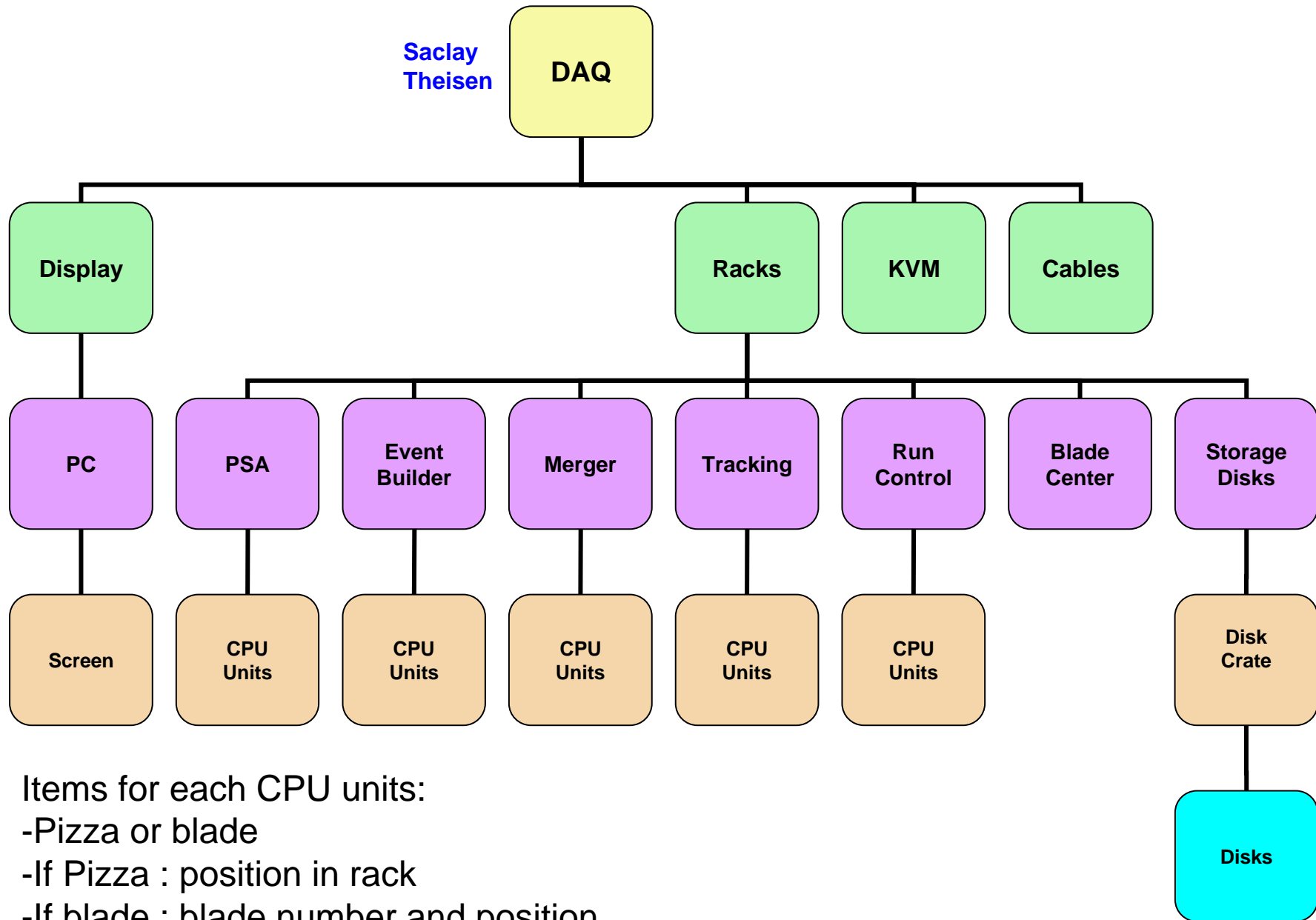
- Reaction chamber (1)
- Telescopic beam line (1)

- Cryogenics

(A. Gadea)

- Manifolds (2)
- Flexible inlet vacuum line (6)
- Bayonnets (6)
- Flexible outlet vacuum line (6)





Items for each CPU units:

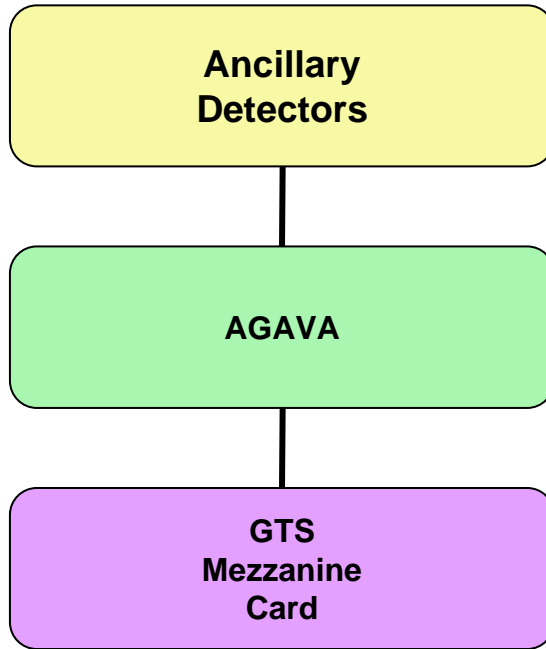
- Pizza or blade
- If Pizza : position in rack
- If blade : blade number and position

LNL  
A. Gadea

Ancillary  
Detectors

AGAVA

GTS  
Mezzanine  
Card



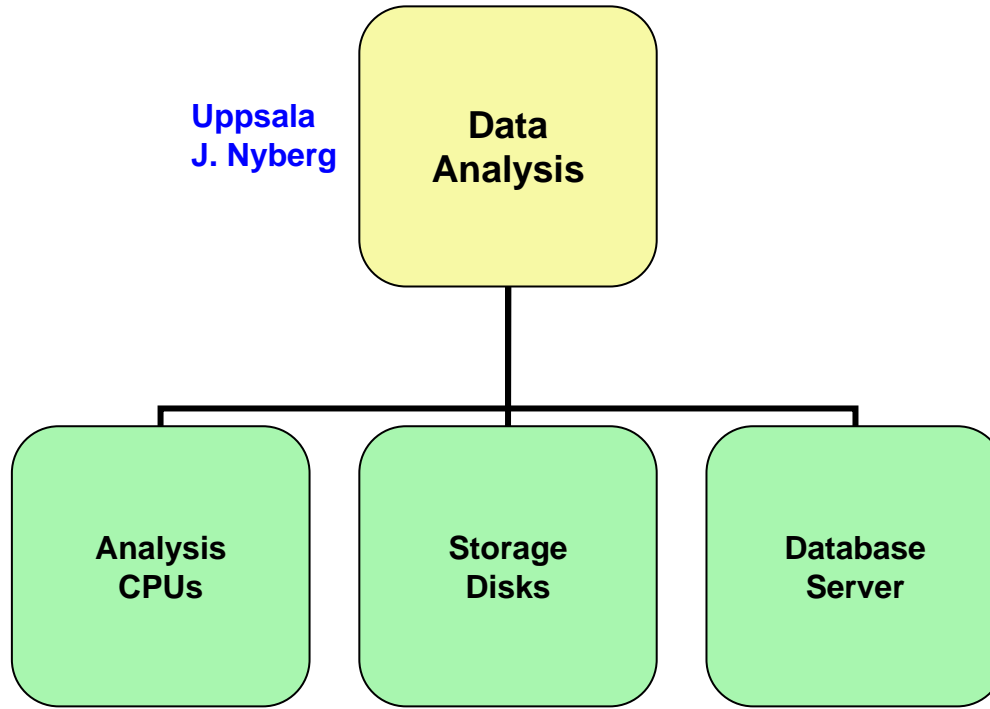
Uppsala  
J. Nyberg

**Data  
Analysis**

**Analysis  
CPUs**

**Storage  
Disks**

**Database  
Server**



Ge detector positions in the array  
Electronic configuration  
DAQ configuration

...

